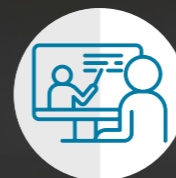


# PeoplePlus Scotland - An Overview



For over 16 years PeoplePlus has been working in Scotland with employers and partners to **support those furthest from the labour market.**

Every day we make a **positive difference to people's lives through:**



Supporting people to find and keep jobs



Working with employers to build a skilled and happy workforce



Helping people to live independently



Helping people to set up their own businesses



Rehabilitating people with convictions, helping them turn their lives around



Supporting unpaid carers



Delivering skills training to further people's careers



Innovative labour market programmes that align employer need with training help to ensure people are trained for available jobs in their local communities



Tackle the root causes of offending

**We do all this in partnership with like-minded public, private and voluntary organisations to ensure our efforts are coordinated and are having the right impact in our communities.**

**As a provider of mainstream-funded services** we're keen to work with you and other Local Employment Partnerships to share details of our services, and gain insight and learning so that we can work in partnership to tackle inequalities in the labour market.

We have a detailed knowledge and understanding **of our communities.**  
**Our track record includes:**



The Scottish Government's **Fair Start Scotland service** across Glasgow and the Highlands and Islands



**DWP** New Enterprise Allowance across the whole of Scotland



**SDS** Employability Fund services including Individual Training Accounts and the Flexible Workforce Development Fund



DWP DPS/**Flex Fund** contracts across Scotland



Part of the **Staffline Group** - the UK's largest recruiter, which fills 3000 roles each year across 16 employers in Scotland.



2 contracts for **'No One Left Behind'**

We are members of:  
 Scottish Union of Supported Employment



## Who **we work with**

**Working in partnership is key** - this enables us to understand the communities we are working with, and can make positive changes that benefit not only our partners, but local and regional societies.

### Our partners include -

- The Lennox Partnership
- Men Matter Scotland
- The Glenburn Centre
- Roystonhill Community Network
- The Food Pantry Network
- Greater Easterhouse Supporting Hand
- Pollockshaws Area Network
- Garnethill Multicultural Centre
- Springburn Community Hub
- Milton Food Pantry
- Parkhead Housing Association

### Highlands & Islands

- Triage
- Third Sector Hebrides
- Lochaber Hope
- Argyll and Bute employability team
- 20/20 Clearview

**"Since we started working with People Plus in August 2021, every member of our community who came in and asked for support from Tracy and Kevin, have now either moved on to further education or gained employment. The service has been invaluable in helping our clients on their journey and we look forward to working in partnership with this great service for many more years to come".**  
**Roystonhill Community Hub Angie Fraser**

### Employers we work with:

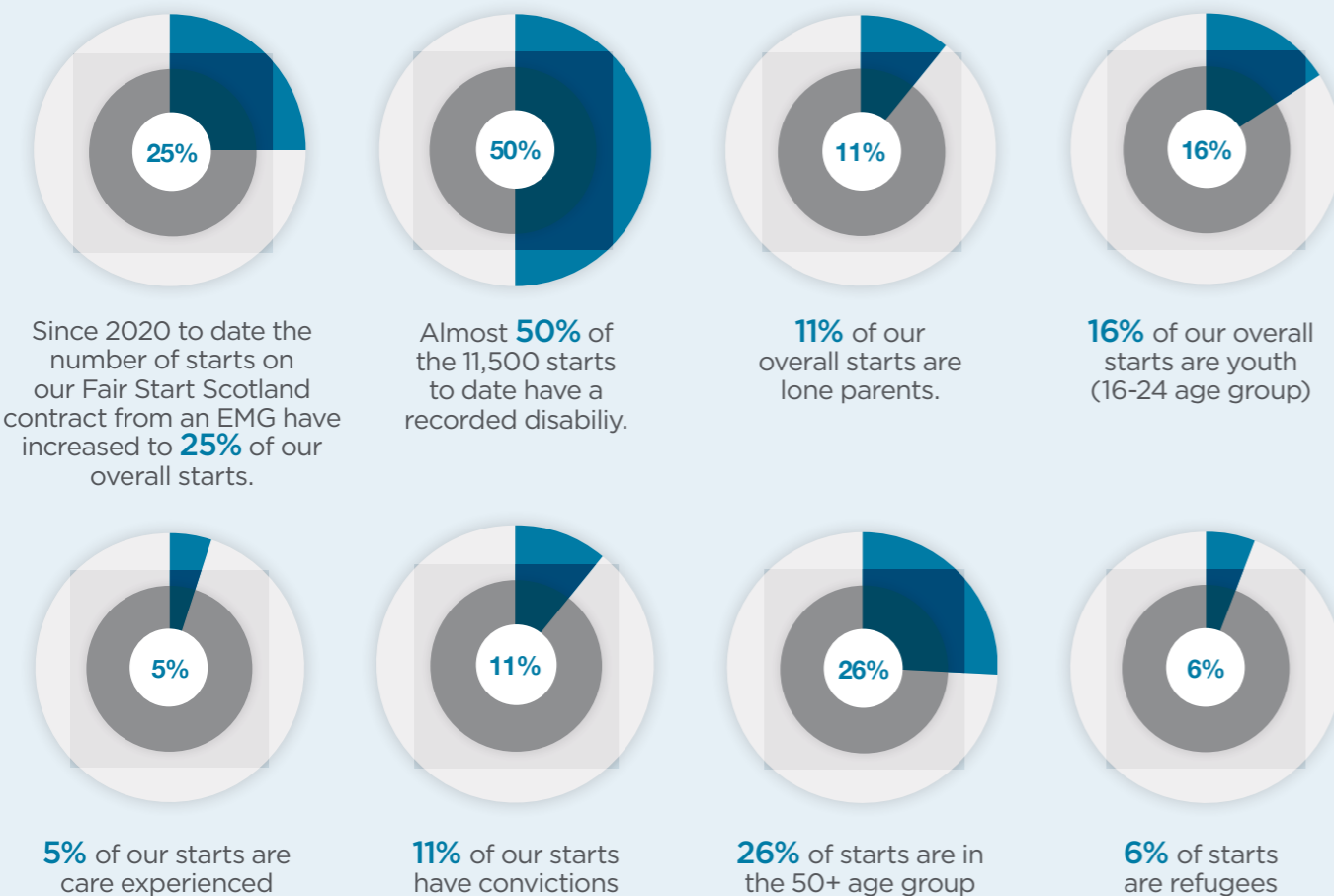


# Our Track record



## Over the last 2 yrs we have placed a significant focus on engaging under represented groups, the key groups include:

ex-offenders | long term unemployed | people from an ethnic minority group  
people with disabilities or learning differences | veterans | refugees



For many years, PeoplePlus has been a passionate and ambitious advocate of socially responsible recruitment, which can be defined as equitable and inclusive employment practises that seamlessly meet employer need but also positively impacts every part of society and the economy by ensuring that people from disadvantaged groups can obtain sustainable employment.



**The Social Recruitment Framework (SRF)**  
The SRF supports employers with single point access to some of the UK's best employability and skills training providers, seamlessly enabling employers to access appropriately trained job ready candidates. This enables employers to recruit in a socially responsible way from a wide pool of candidates, all of whom are trained specifically for the jobs they're put forward for.

**IMPACT TO DATE:**  
2,000 SWAPS delivered  
11,000 guaranteed interviews arranged  
2,800 job starts

**The Social Impact Hub** is a suite of social value programmes designed to address barriers to employment. The hub model takes each employment barrier theme and harnesses the collective power of employers, partners and trusted local organisations to tackle these barriers, enabling employers to meet their recruitment needs through previously untapped talent pools and supporting people and communities who have previously been overlooked in the job market. The social impact programmes have all been carefully designed to address the most significant barriers to work, with particular emphasis on supporting:

- ex-offenders
- long term unemployed
- ethnic minority communities
- people with disabilities or learning differences
- veterans
- refugees



**#GetBritainWorking** supercharges the recruitment process, giving work ready job seekers a fast track to 000's of employer interviews via our unique, user friendly Chatbot. Candidates can book on to an interview within 8 minutes of finding a suitable vacancy, making this the only service of its kind in the UK. Working with Job Centre Plus, partners and large-scale employers, the goal is to give every job ready candidate efficient access to guaranteed interviews.

The Social Impact Hub is co-created with local communities including local authorities and trusted VCSE providers to ensure the solutions are based upon local need. It brings together the best quality services from private and not for profit sectors. Importantly, we use a social value calculator to demonstrate the value of the Social Impact Hub work and how it drives value in local communities.

We use a Social Value Calculator to calculate the social and economic benefit created through our Social Impact Hub programmes, helping our employer and partner members understand their economic and community contributions through a simple, easy to understand fiscal calculation.



Visit us online

 [peopleplus.co.uk](https://peopleplus.co.uk)

 [partners@peopleplus.co.uk](mailto:partners@peopleplus.co.uk)

 [PeoplePlusUK](https://www.linkedin.com/company/peopleplusuk)

 [@PeoplePlusUK](https://twitter.com/PeoplePlusUK)

 [PeoplePlusUK](https://www.facebook.com/PeoplePlusUK)

**“The partnership work with People Plus has been very beneficial for us and our community.**

The opportunities and support given by Iain, Elaine and the team have helped so many people move into work or take progressive steps towards it. The person centred approach taken by the People Plus keyworkers has been one of the highlights of the partnership and has helped build links within the community”.

**The Glenburn Centre Andy Gilbert**